

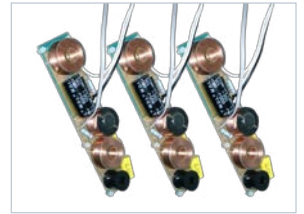
General



Vienna Acoustics redefined the performance expectations of on-wall loudspeakers with their new Schönberg Series. Finally, true high fidelity could be realized using loudspeakers that do not infringe upon your living space. Furthermore, Schönberg Series models BERG, WEBERN and SCHÖNBERG all feature low profile enclosures and a natural aluminum finish that make them ideal partners for use with wall-mounted plasma televisions. With this in mind, the engineers at Vienna Acoustics created TRIO.

Designed for individuals seeking a simple and unified solution for providing the Left, Right and Center channels in a surround sound system, without sacrificing sound quality. Sized, scaled and finished to cosmetically blend with virtually any plasma television when mounted beneath its screen. In this configuration excellent midrange articulation is achieved and a surprisingly wide soundstage is realized. Trio's superb channel separation and pin-point image localization rivals performance associated with more complicated systems. With Trio, performance blended with simplicity is accomplished.

Features



The superior and special technology of BERG and WEBERN is used for TRIO, but with the advantage that TRIO's enclosure offers much more volume than BERG cabinets, therefore extending bass performance into deeper bass areas whilst at the same time impulse response is improved, resulting in accurate and strong bass with slam.

Left, Right and Center channels are provided in a surround sound system within one single SCHÖNBERG-technology cabinet, without sacrificing sound quality. This is made possible by how Surround technology such as Dolby Digital, AC3, DTS etc works, whereby in short the surround effects are not dependent on the distances between the loudspeakers, but amongst other criteria by phase relations. In extensive listening testings we have found out the minimum distance between Left and Right, at which further distance enlargement does not further increase Surround performance, and implemented this optimal distance into TRIO, resulting in a very compact enclosure of 33" width (10,5" height and 3,5" depth).

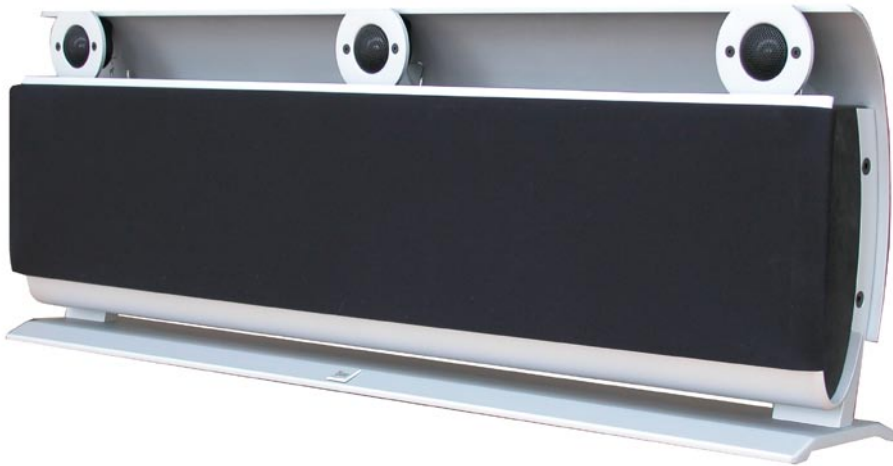
Internally each TRIO is divided into 3 separate and independent chambers.

Besides this technical background, most striking is TRIO's sound, it is so fluid and musical that it surprises in each performance. Without any compromise we can recommend TRIO to be devoted to 2 channel stereo presentations complementary to his Hometheater application.

You can choose between an ingenious aluminum wall-mounting device, developed to provide the best environment for superior sound quality, or an ultra-rigid aluminium centerstand alternatively, if you do not wish to mount the speaker to the wall.

No matter which positioning option is chosen, the beautifully curved cabinet will always be in smooth harmony with any wall and listening room.

Specs



Silver

Speaker Type

Main Application

System Type

Bass System

Frequency Response

Mid-Woofer

Tweeter

Shielding

Sensitivity

Impedance

Recommended Power

TRIO Weight

Dimensions (WxHxD)

Positioning

3 in 1 - 3 speakers combined in one cabinet

Surround as Left, Center, Right

2 way system

6/12 dB Bessel

Closed Cabinet

70 - 25.000 Hz

1 x 6" VA

Transparent -

XPP Cone

3-Magnet - Neodym VA, Ventilated - Chamber

Handcoated - 1" Silk Dome

100%

89 dB

4 Ohms

30 - 180 Watts per speaker

20 kg

44 Ibs

33.0 x 10.5 x 3.5"

840 x 265 x 90 mm

Aluminium wall-mounting-bracket or

Aluminium center stand

Contact:

Vienna Acoustics

Rysergasse 60

A - 1230 Wien - Vienna

AUSTRIA

Phone: +43 (0)1 88 96 815

Fax: +43 (0)1 88 96 599

e-mail: office@vienna-acoustics.com

Web: www.vienna-acoustics.com